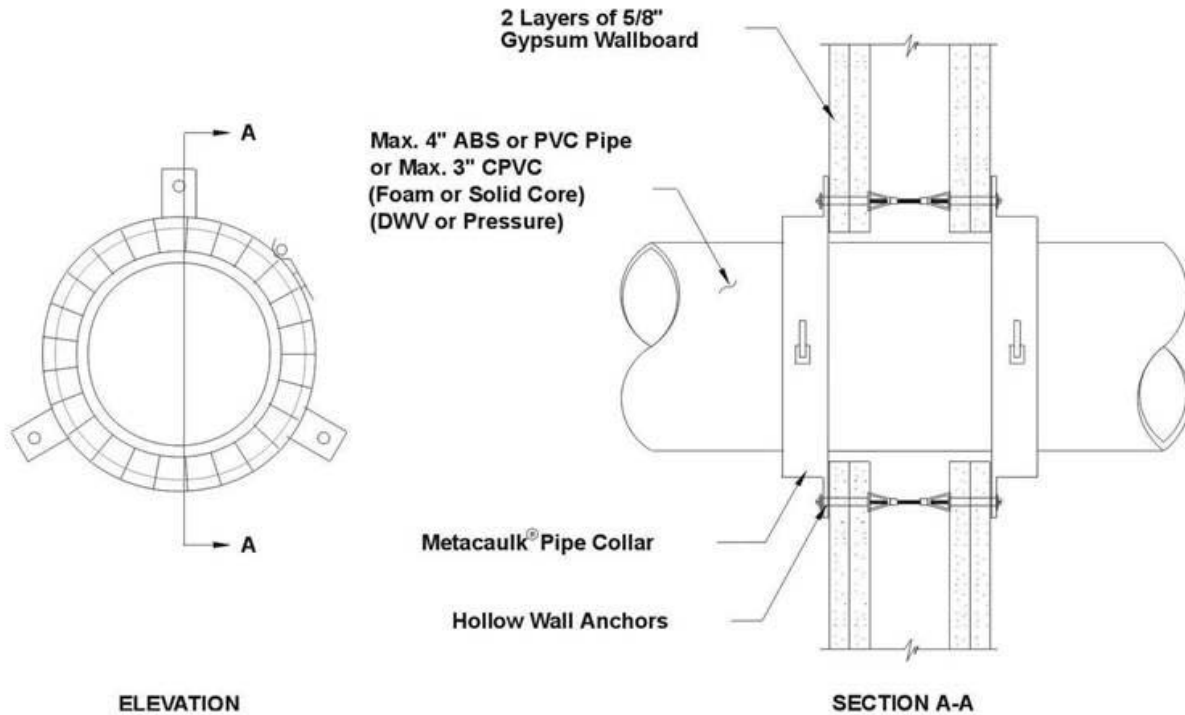


**DESIGN NO. TRC/PV 120-18**

**VERTICAL (WALL), RATINGS: CAN/ULC-S115 2 HRS (F, FH), 1 HR (FT, FTH);  
ANNULAR SPACING 1/16" MIN. & 3/16" MAX. - ABS, 6" PVC,  
ANNULAR SPACING 1/16" MIN. & 1/2" MAX. - 4" PVC, 3" CPVC  
TEST PRESSURE DIFFERENTIAL - 50 Pa (0.20" OF WATER)**



Manufacturer's Designation: Pipe Collar GW-21.

**Wall:** Minimum nominal 2 x 4 wood or steel stud framed gypsum wallboard faced wall assembly, providing a 2 hr rating.

**Penetrations:** Max. 4" diameter SCH 40 ABS or PVC DWV or process and supply, cellular core or solid, max. 3" diameter CPVC.

**Metacaulk® Pipe Collar:** Sized appropriately for pipe fastened to both sides of gypsum wall assembly in accordance with Rectorseal Corp. installation instructions.

**Metacaulk® 1000:** Optional - Sealant installed to a depth of 1/2".